

Ava Lucile



Brian Robbins photo

NEW BOATS 2019

Jannell Deane



Brian Robbins photo

BUILDER: SW BOATWORKS, LAMOINE, ME
FINISHER: JOHN'S MARINE CARE, NEW HARBOR, ME
OWNER: JASON LORD, NEW HARBOR, ME

Dimensions: 42'x15'x4'2" (14'2" transom)
Designer: Calvin Beal Jr., Beals Island, ME
Hull: Solid fiberglass
Top: Dual station; molded unit
Power: D13 Volvo Penta (700 hp @ 2300 rpm) w/ 2.19:1 ZF 360A marine gear; Billings Diesel & Marine
Speed: 25.2 knots WOT; 20 knot cruise @ 2000 rpm
Prop: 34"x34"x4; Nautilus Marine
Shaft & Driveline Hardware: 2-1/2"; R.E. Thomas Marine Hardware
Hauler & Steering: Billings & Cole
Hatches: Bomar (Hamilton Marine); custom by Esposito's Welding
Metal Fabrication: Esposito's Welding
Electronics: Hamilton Marine; Pete's Marine Electronics; Nelson's Marine Electronics

Trim Tabs: Humphree USA
Comments: Ava Lucille owner Jason Lord praised finisher John Brackett's "excellent work. John's meticulous about everything he does." Besides lobstering duties, the 42-footer will be lugging pogies for bait.

BUILDER: SW BOATWORKS, LAMOINE, ME
FINISHERS: CALVIN BEAL JR., CALVIN S. BEAL, ROGER BEAL, CAMERON BEAL
OWNER: ROGER BEAL, BEALS ISLAND, ME

Dimensions: 36'x13'9" (13' transom)
Designer: Calvin Beal Jr., Beals Island, ME
Hull: Solid fiberglass
Top: Single station; molded unit
Power: QSL9 Cummins (450 hp @ 2100 rpm) w/2.04:1 Twin Disc 5065A marine gear; Kennedy Marine Engineering
Speed: 25 knots WOT; 20 knot cruise
Prop: 29"x31"x3; Nautilus Marine
Shaft & Driveline Hardware: 2-1/4"; R.E. Thomas Marine Hardware
Hauler & Steering: Marine Hydraulic Engineering Co. Inc.
Hatches: Anchor; Hamilton Marine
Metal Fabrication: Kennedy Marine Fabrication
Electronics: Hamilton Marine
Wiring: Shawn Alley

Comments: The finishing of the Jannell Deane was a three-generation effort: Roger Beal's father-in-law Calvin Beal Jr. was part of the process, as well as Roger's son Cameron (and his brother-in-law Calvin S. Beal).

Brought to you by:

FURUNO®

SERIOUS ABOUT FISHING.

www.furunoUSA.com



Brian Robbins photo

BUILDER: SW BOATWORKS, LAMOINE, ME
FINISHERS: CALVIN BEAL JR., CALVIN S. BEAL
OWNER: CALVIN S. BEAL, JONESPORT, ME

Dimensions: 42'x15'x4'2" (14'2" transom)
Designer: Calvin Beal Jr., Beals Island, ME
Fishery: Lobster
Hull: Solid fiberglass
Top: Single station; molded unit
Power: C90 FPT (620 hp @ 2530 rpm) w/2.03:1 ZF 305-3A marine gear; Kennedy Marine Engineering
Speed: 27 knots WOT; 20 knot cruise @ 2000 rpm
Prop: 30"x31"x3; Nautilus Marine
Shaft & Driveline Hardware: 2-1/4"; R.E. Thomas Marine Hardware
Hauler & Steering: Marine Hydraulic Engineering Co. Inc.
Hatches: Anchor; Hamilton Marine
Metal Fabrication: Kennedy Marine Fabrication
Electronics: Hamilton Marine
Wiring: Shawn Alley

Comments: This makes the fourth 42' Vondell Lea that Calvin S. Beal (son of the well-known designer/builder) has finished for himself to fish for a season and then sell.

Ain't Miss Behavin

NEW 2019 BOATS



Brian Robbins photo

BUILDER: SW BOATWORKS, LAMOINE, ME
FINISHER: LITTLE RIVER BOAT SHOP, CUTLER, ME
OWNER: TREVOR JESSIMAN, CUTLER, ME

Dimensions: 44'x17'6" (16'2" transom)
Designer: Calvin Beal Jr., Beals Island, ME
Fishery: Lobster
Hull: Solid fiberglass
Top: Single station; molded unit modified by Little River Boat Shop
Power: 6135SFM85 John Deere (750 hp @ 2200 rpm) w/2.5:1 ZF 360A marine gear; Toppin's Diesel
Speed: 24.5 knots (WOT); 21 knot cruise @ 2000 rpm
Prop: 37"x41"x4; Little River Boat Shop
Shaft & Driveline Hardware: 2-1/2"; R.E. Thomas Marine Hardware
Hauler & Steering: Marine Hydraulics Engineering Co. Inc.
Metal Fabrication: TNT Fabrication; Little River Boat Shop
Electronics: Blackmore Electronics
Fuel Capacity: 540 gallons fuel (dual tanks)
Comments: "Ever since I was a little kid, it was always a dream of mine to have Little River finish a boat for me," said Trevor Jessiman. "I've seen the kind of workmanship they do. If they build a boat, you don't have to worry about it coming apart, no matter how hard you work it."

Miss Ann



Brian Robbins photo

BUILDER: SW BOATWORKS, LAMOINE, ME
FINISHER: MAINELY BOATS, CUSHING, ME
OWNER: JIM GALLOWAY, SANTA BARBARA, CA

Dimensions: 30'x12'x3'10" (11'6" transom)
Designer: Calvin Beal Jr., Beals Island, ME
Power: QSC8.3-500 T3 Cummins (500 hp @ 2600 rpm) w/1.79:1 ZF 305A marine gear; Kennedy Marine Engineering
Speed: 33 knots (WOT); 25 knot cruise @ 2000 rpm
Prop: 28"x32"x4; Nautilus Marine
Shaft: 2"; Nautilus Marine
Driveline Hardware: R.E. Thomas Marine Hardware
Hauler & Steering: Marine Hydraulics Engineering Co. Inc.
Hatches: Skipper Fisheries Ltd.
Metal Fabrication: Ragged Mountain Welding; Mark's Metal
Wiring: Brackett Dow
Comments: Miss Ann is an interesting example of an alternative use for a Beals Island lobster boat design. Mainely Boats' Mike Hooper says the 30-footer will be trucked to California and put into service as a tow boat for surf boarders. In this case, extra weight (Mike says around 10,000 lbs. of water) will be added daily to the normally smooth-sailing Calvin Beal Jr. design to generate maximum wake for the surfers to ride.

Brought to you by:

FURUNO

SERIOUS ABOUT FISHING.

www.furunoUSA.com

Obsession

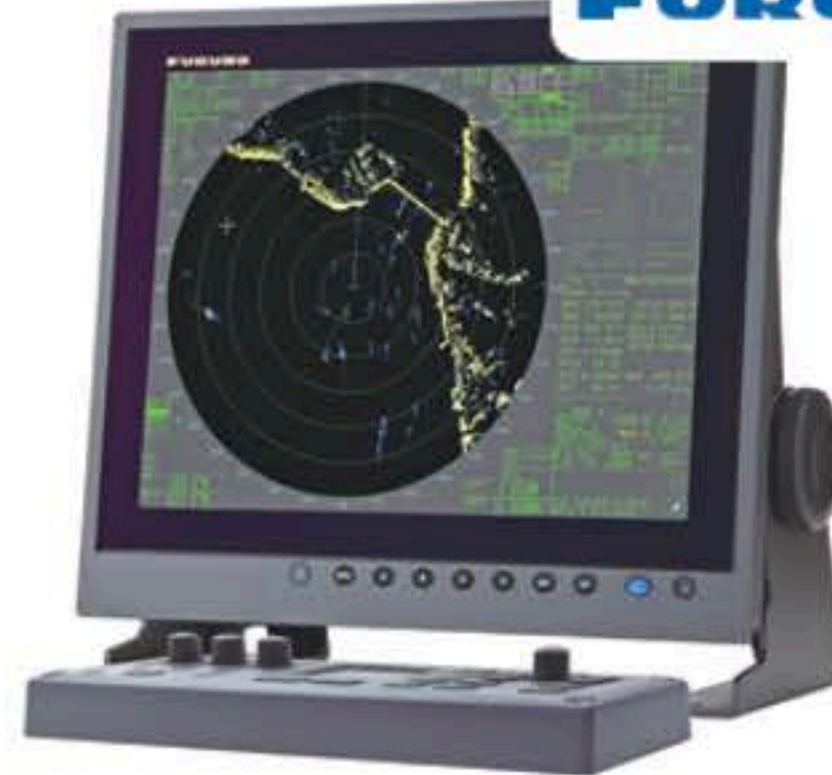


Brian Robbins photo

BUILDER: SW BOATWORKS, LAMOINE, ME
FINISHER: LITTLE RIVER BOAT SHOP, CUTLER, ME
OWNERS: RYAN AND JACKSON LEMIEUX, CUTLER, ME

Dimensions: 35'x12'6"
Designer: Ernest Libby Jr., Beals Island, ME
Fishery: Lobster
Power: D8 Volvo Penta (550 hp @ 2900 rpm) w/2:1 ZF 310A marine gear; Billings Diesel & Marine
Hauler & Steering: Marine Hydraulics Engineering Co. Inc.
Hatches: Freeman; Hamilton Marine
Electronics: Blackmore Electronics
Comments: Three generations of Cutler, ME's Lemieux family were involved in the building of Obsession. Little River Boat Shop's Norbert Lemieux and his son Nick wanted to build a boat that Nick's sons Ryan and Jackson could handle and fish safely in the summer and fall months when they weren't in school, earning their keep and paying it off as they go along. Starting with a standard Young Brothers 33'x11' model, they cut the hull lengthways and spread the beam out to 12'6" (adding chines to the outer bilges); added 4" of sheer all the way around; and lengthened her to 35' overall. "She's steady as a rock and dry as can be," says Norbert. "She's a good boat for the boys to work out of."

FURUNO



FAR1513 Black Box Radar

The FAR1513 Black Box 12kW Radar matches virtually any size monitor with an easy-to-use control unit that includes individual knobs for gain/sea/rain clutter suppression, as well as a RotoKey and touch panel for simple, efficient operation. It features Automatic Clutter Elimination (ACE) that automatically adjusts clutter reduction filters and gain control according to sea and weather conditions selected by the user (calm/rough sea/hard rain). It also has Target Analyzer that displays moving targets, stationary targets, rain, sea surface and targets closing in on your vessel in different colors. After selecting a target, it only takes a few seconds for a speed and course vector to be displayed with Fast Target Tracking. Interface with Nobeltec TimeZero Professional for more features.

Princess and Angel



Brian Robbins photo

NEW BOATS 2019

Bella Marie



Brian Robbins photo

BUILDER: SW BOATWORKS, LAMOINE, ME
FINISHER: FARRIN'S BOATSHOP, WALPOLE, ME
OWNER: RICHARD "YOGI" NUNAN, CAPE PORPOISE, ME

Dimensions: 38'9"x15'x4'2" (14'2" transom)
Designer: Calvin Beal Jr., Beals Island, ME
Power: D13 Volvo Penta (700 hp @ 2300 rpm) w/2.04:1 Twin Disc marine gear; Billings Diesel & Marine
Speed: 24.3 knots WOT; 18 knot cruise (65% load)
Prop: 32"x31"x4; Nautilus Marine
Shaft & Driveline Hardware: 2-1/2"; R.E. Thomas Marine Hardware
Hauler & Steering: Billings & Cole
Hatches: Freeman, Bomar; Hamilton Marine
Metal Fabrication: Blue Water Fabrication
Electronics: Sawyer & Whitten Marine Electronics
Wiring: Fairwind Marine
Trim Tabs: Humphree USA; Power Products

Comments: The launches of the 38' Princess And Angel and the 42' Bella Donna in 2019 were all about fathers and sons; the boat-building Farrin family of Walpole, ME (Bruce Farrin Sr. along with sons Brian and Bruce Jr.) finished the two Calvin Beal-designed hulls side-by-side for Cape Porpoise lobstermen Richard "Yogi" Nunan and his son Jon.

BUILDER: SW BOATWORKS, LAMOINE, ME
FINISHER: FARRIN'S BOATSHOP, WALPOLE, ME
OWNER: JON NUNAN, CAPE PORPOISE, ME

Dimensions: 42'x15'x4'2" (14'2" transom)
Designer: Calvin Beal Jr., Beals Island, ME
Power: D13 Volvo Penta (700 hp @ 2300 rpm) w/2.04:1 Twin Disc marine gear; Billings Diesel & Marine
Speed: 24.3 knots WOT; 18 knot cruise (65% load)
Prop: 32"x31"x4; Nautilus Marine
Shaft & Driveline Hardware: 2-1/2"; R.E. Thomas Marine Hardware
Hauler & Steering: Billings & Cole
Hatches: Freeman, Bomar; Hamilton Marine
Metal Fabrication: Blue Water Fabrication
Electronics: Sawyer & Whitten Marine Electronics
Wiring: Fairwind Marine
Trim Tabs: Humphree USA; Power Products

Comments: Both Jon and Yogi Nunan had high praise for Farrin's Boatshop. Jon was impressed with his 42-footer's steadiness right off the bat. "Coming down the Damariscotta River to head home," he says, "it was getting nasty. Once we were out in it, you'd brace off for one and ... nothing. 'Where'd it go?' She felt great - really comfortable."

Brought to you by:

FURUNO

SERIOUS ABOUT FISHING.

www.furunoUSA.com

Ivy Jean



Brian Robbins photo

NEW BOATS

BUILDER: SW BOATWORKS, LAMOINE, ME
FINISHER: MAINELY BOATS, CUSHING, ME
OWNER: ERIC KNIGHT, PORTLAND, ME

Dimensions: 44'x17'6" (16'2" transom)
Designer: Calvin Beal Jr., Beals Island, ME
Fishery: Lobster/tuna
Hull: Solid fiberglass
Top: Dual station; dual station
Power: 6135SFM85 John Deere (750 hp @ 2200 rpm) w/2.19:1 ZF 360A marine gear; Art's Marine Service Inc.

Speed: 24.1 knots WOT
Prop: 32"x34"x4; Nautilus Marine
Shaft: Nautilus Marine
Driveline Hardware: R.E. Thomas Marine Hardware
Hauler & Steering: Lonnie's Hydraulics
Hatches: Skipper Fisheries Ltd.
Metal Fabrication: Crosby's Welding, Ragged Mountain Welding, Nautilus Marine
Electronics: Sawyer & Whitten Marine Electronics
Wiring: Brackett Dow
Trim Tabs: Zipwake; Imtra

NEW BOATS 19

Sweet Victory



Brian Robbins photo

BUILDER: SW BOATWORKS, LAMOINE, ME

OWNER: TRAVIS AIKEN, CUSHING, ME

Dimensions: 44'x17'6" (16'2" transom)

Designer: Calvin Beal Jr., Beals Island, ME

Fishery: Lobster

Hull: Solid fiberglass

Top: Dual station; molded unit (modified by SW Boatworks)

Power: 6135SFM85 John Deere (750 hp @ 2200 rpm) w/2.48:1 ZF
360A marine gear; Art's Marine Service

Speed: 23 knots WOT; 15 knot cruise @ 1650 rpm

Prop: 34"x42"x4; Nautilus Marine

Shaft & Driveline Hardware: 2-1/2"; R.E. Thomas Marine Hardware

Hauler: Marine Hydraulics Engineering Co. Inc.

Steering & Hydraulics: Lonnie's Hydraulics

Windows/Door: Bomar

Hatches: Bomar (Hamilton Marine); custom hatches by Esposito

Metal Fabrication: Esposito's Welding

Electronics: Kramp Electronics

Trim Tabs: Lenco Marine

Fuel Capacity: 550 gallons (dual tanks)

Tankage: Three below-deck circulating lobster tanks